

# KOMATSU

## PC1250-11R



Hydraulic excavator

**Engine power**

578 kW / 775 HP @ 1800 rpm

**Operating weight**

Backhoe: 116400 - 118800 kg

Loading shovel: 119700 - 119900 kg

**Bucket capacity**

Backhoe: 3.40 - 7.00 m<sup>3</sup>

Loading shovel: 6.50 - 7.20 m<sup>3</sup>

## PC1250-11R



### Engine power

**578 kW / 775 HP @ 1800 rpm**

### Operating weight

**Backhoe: 116400 - 118800 kg**

**Loading shovel: 119700 - 119900 kg**

### Bucket capacity

**Backhoe: 3.40 - 7.00 m<sup>3</sup>**

**Loading shovel: 6.50 - 7.20 m<sup>3</sup>**





# Excellent economy and high productivity

## Powerful and environmentally friendly

- Fuel efficient high performance Komatsu SAA6D170E-7 engine
- Adjustable idle shutdown
- Auto-decelerator
- Komatsu fuel-saving technology
- 6% fuel consumption reduction

## Maximised efficiency

- Increased productivity (up to 8%)
- Large digging force
- Large drawbar pull and steering force
- Two-mode boom control
- Swing priority mode

## First-class comfort

- Fully air-suspended operator station
- Low-noise design
- Widescreen monitor

## Safety first

- Komatsu SpaceCab™
- KomVision surround view system
- Neutral position detection system
- Hydraulically operated stairway
- Emergency engine stop switches
- LED lights as standard

## Quality you can rely on

- Komatsu-quality components
- Extensive dealer support network

## Komtrax Plus

- Immediate diagnostics of machine
- Operational data reports

Photos may include optional equipment

## PC1250-11R



### Higher productivity

Work modes include the well-known Power and Economy modes, and the PC1250-11R also benefits from the new "Power plus" (P+) mode, which allows the operator to make full use of the increased engine power to achieve up to 8% higher production than with a PC1250-8R in P mode.

### Komatsu fuel-saving technology

Fuel consumption on the PC1250-11R is lower by up to 6%. Engine management is enhanced. The variable speed matching of the engine and hydraulic pumps guarantee efficiency and precision during single and combined movements.

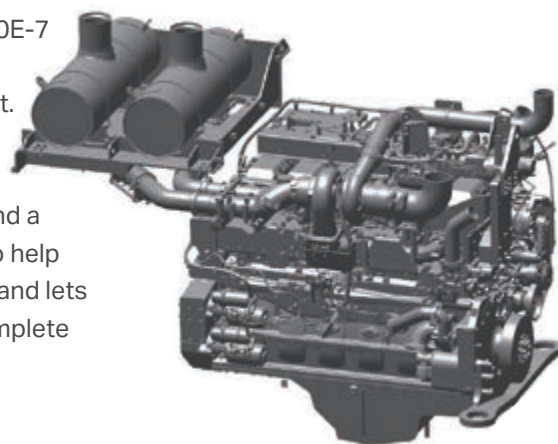
### Adjustable idle shutdown

The Komatsu auto idle shutdown automatically turns off the engine after it idles for a set period of time. This feature can easily be programmed from 5 to 60 minutes, to reduce unnecessary fuel consumption and exhaust emissions, and to lower operating costs. In addition, the new auto-deceleration function automatically lowers engine speed, when levers are in neutral for a set time.

## Powerful and environmentally friendly

### Komatsu engine

The Komatsu SAA6D170E-7 engine is productive, dependable and efficient. With low emissions, it provides a lower environmental impact and a superior performance to help reduce operating costs and lets the operator work in complete peace of mind.



### Electronically controlled variable speed fan

The fan speed is electronically controlled according to actual operating conditions, ensuring maximum deployment of engine power to working, while minimising noise.

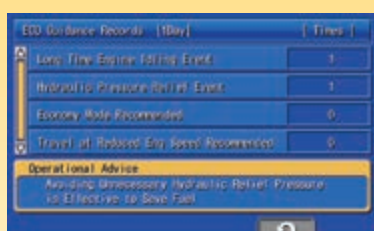


#### ECO guidance

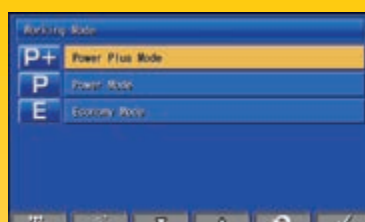
While the machine is operating, ECO guidance operation tips pop up on the monitor, guiding the operator to achieve better fuel efficiency.

#### ECO gauge & fuel consumption gauge

The monitor screen includes an ECO gauge and also a fuel consumption gauge which is continuously displayed. In addition, the operator can set any desired target value of fuel consumption (within the range of the green display), enabling the machine to be operated with better fuel economy.

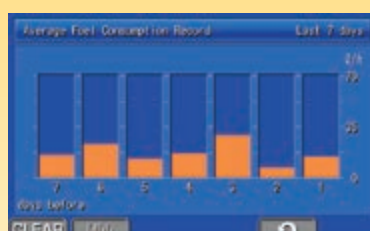


Eco guidance record

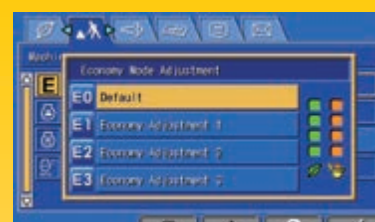


#### Three work modes for large-working volume & low fuel consumption

In addition to the newly added [P + mode], the new [P mode] has reduced fuel consumption with the same production volume as the conventional P mode, and the new [E mode] which has same speed at light load as the conventional P mode with further reduced fuel consumption. The three work modes can be selected with one touch using the monitor switch.

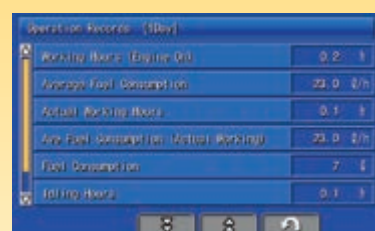


Fuel consumption history



#### Multiple E mode setting for reduced fuel consumption

For work that requires reduced fuel consumption, three stages of E mode can be selected to flexibly adapt to any operating condition.



Quick view on the operation logs



## Maximised efficiency

### Powerful digging force

Thanks to the high engine output and an optimised hydraulic system, the PC1250-11R delivers a powerful arm crowd force of up to 412 kN (42 tonnes) at PowerMax and a bucket digging force of up to 570 kN (58.1 tonnes) at PowerMax.

### Shockless boom control

The PC1250-11R features a shockless valve (double-check slow return valve) that automatically reduces the amount of vibration present when operating the boom. Operator fatigue is reduced (which can improve safety and productivity), and spillage caused by vibration is prevented.

### Swing priority mode

A twin swing motor system provides excellent swing performance, with high speed and strong braking power. The swing priority setting allows using the same smooth motion for either 180° or 90° loading operations. By altering the oil flow, the operator selects either boom or swing as the priority for increased production.

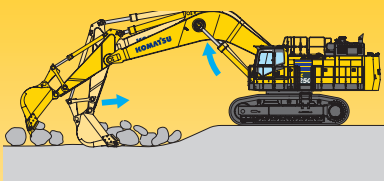
### Large drawbar pull and steering force

Because the machine has a large drawbar pull and a substantial steering force, it provides excellent mobility, even when working on an incline.

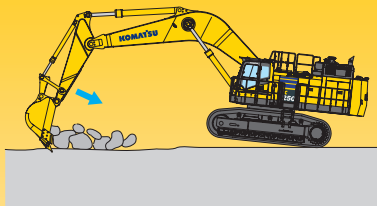
### Heavy lift mode

Gives the operator 10% more lifting force on the boom when needed for handling rock or heavy lifting applications.

### Two-mode boom control



**Smooth mode**  
Boom floats upward, reducing lifting of machine front. This facilitates gathering blasted rock and scraping down operations.



**Power mode**  
Boom pushing force is increased, providing a higher penetration force.









## First-class comfort

### Increased comfort

In the wide Komatsu SpaceCab™, a standard air-suspended high-back seat, heated and ventilated for improved comfort and with fully adjustable armrests, is the centre of a comfortable and low-fatigue working environment. High visibility and ergonomic controls further assist to maximise the operator's productivity.

### Perfect operator convenience

In addition to the standard AM/FM radio, the PC1250-11R has Bluetooth® and an auxiliary input for connecting external devices and playing music through the cab speakers. Two 12-volt power ports are also incorporated in the cab. Proportional controls are fitted as standard for safe and precise operation of attachments.

### Low-noise design

Komatsu crawler excavators have very low external noise levels. The optimal usage of sound insulation and of sound absorbing materials helps to make noise levels inside the cab comparable to those of an executive car.



Convenient, ergonomic and precise control: joysticks



Plenty of storage room, a hot and cool box, a magazine box and a cup holder



Armrest with simple height adjustment





### Lower operating costs

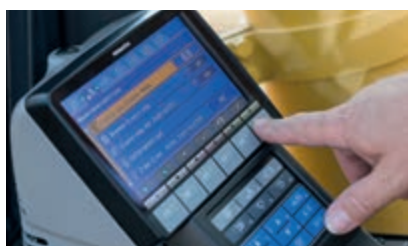
Komatsu ICT contributes to the reduction of operating costs by assisting to comfortably and efficiently manage operations. It raises the level of customer satisfaction and the competitive edge of our products.

### Widescreen monitor

Conveniently customisable and with a choice of 26 languages, the widescreen monitor with simple switches and multifunction keys gives fingertip access to a large range of functions and operating info. The KomVision images and Eco gauge are now incorporated into the default main screen.

### An evolutionary interface

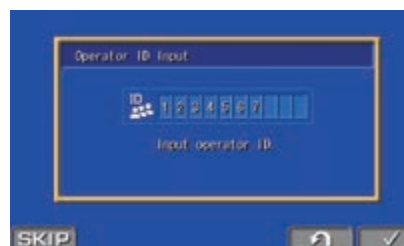
Helpful information is now easier than ever to find and understand with the upgraded monitor interface. An optimal main screen for the ongoing work can be selected simply by pressing the F3 key.



Versatility at your fingertips: select the perfect setting for each job



With KomVision, various camera view options are available whilst maintaining constant "birdview" from above the machine



Operator identification function

## Safety first

### Optimal jobsite safety

Safety features on the Komatsu PC1250-11R comply with the latest industry standards and work in synergy to minimise risks to people in and around the machine. A neutral detection system for travel and work equipment levers increase jobsite safety, along with a seat belt caution indicator and an audible travel alarm. Highly durable anti-slip plates – with additional high friction covering – maintain long term traction performance.



The hydraulically operated stairway provides safer access and egress to and from the machine.



Three emergency engine stop switches are installed in the cab and around the machine.



KomVision cameras



Exceptional operator protection



Hand rails and anti-slip plates

### KomVision

With a series of high definition networked cameras fitted on the machine, KomVision provides a crystal clear, real-time bird's eye view of the immediate surroundings on the widescreen cab monitor. The operator can quickly and easily check the machine's vicinity prior to making any movement, and focus on the work at hand even in low light conditions.

### Komatsu SpaceCab™

The wide Komatsu SpaceCab™ with user-friendly controls provides a comfortable and safe work environment. A fully adjustable air-suspended seat dampens vibrations and reduces the fatigue of long shifts. Large front and side windows give a superior visibility and higher confidence. This increases the safety for the driver as well as other people and machines on the jobsite.

### Safe maintenance

Thermal guards around high temperature areas of the engine, protected fan belt and pulleys, a pump/engine partition that prevents hydraulic oil from spraying onto the engine, a wide catwalk and exceptionally sturdy handrails: in Komatsu tradition, the highest safety level is provided for a fast and smooth maintenance.





Full LED lighting for improved visibility



Full LED lighting for improved visibility



Secondary engine shut down switch and seat belt caution

## KOMTRAX Plus

### Equipment management support

Komtrax Plus enables expanded monitoring of the fleet via satellite and wireless LAN. Users can analyze "machine health" and performance from a remote location, on a near-real time basis. This includes component condition and trend data. By making this critical information readily accessible, Komtrax Plus is an effective tool in maximizing productivity and lowering operating cost.



### What

- Komtrax is Komatsu's remote equipment monitoring and management system
- Komtrax is standard equipment on all Komatsu construction products
- Komtrax continuously monitors and records machine health and operational data
- Information such as fuel consumption, utilization, and a detailed history aids in making repair or replacement decisions

### Where

- Komtrax data can be accessed virtually anywhere through your computer, the web or your smart phone
- Automatic alerts keep fleet managers up to date on the latest machine notifications

### Why

- Knowledge is power - make informed decisions to manage your fleet better
- Knowing your idle time and fuel consumption will help maximize your machine efficiency
- Take control of your equipment - any time, anywhere

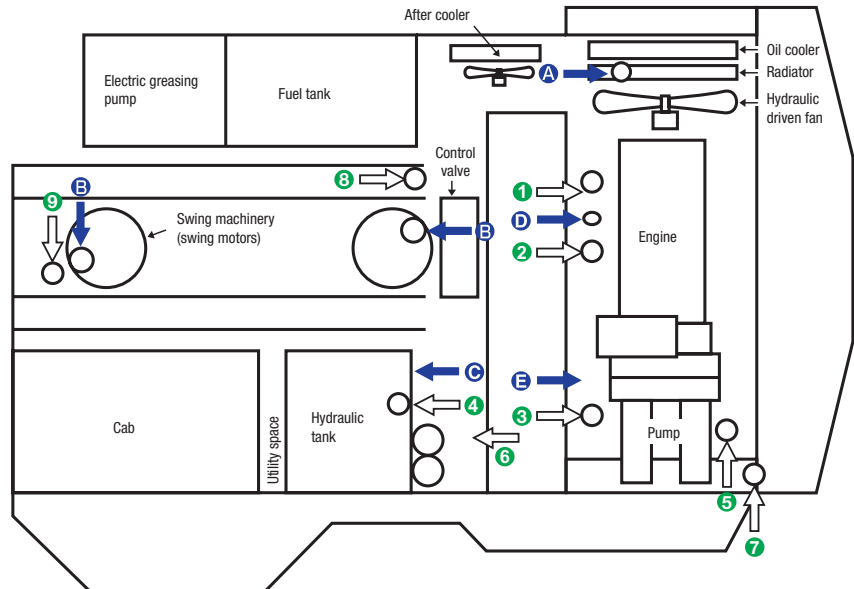
### When

- Know when your machines are running or idling and make decisions that will improve your fleet utilization
- Detailed movement records ensure you know when and where your equipment is moved
- Up to date records allow you to know when maintenance was done and help you plan for future maintenance needs

## Easy maintenance



A wide, illuminated centre walkway provides easy access to many inspection and maintenance points. In addition, inspection and maintenance points are grouped to facilitate easy engine and hydraulic component checks.



- A Coolant
- B Swing machinery oil
- C Hydraulic oil
- D Engine oil
- E PTO oil

- 1 Fuel filters
- 2 Fuel pre-filters
- 3 Engine oil filters
- 4 Hydraulic drain filter
- 5 Pilot filter
- 6 Hydraulic return filters
- 7 PTO strainer
- 8 Swing motor cooling filters

### Long-life oil filters

The Komatsu genuine hydraulic oil filter uses high-performance filtering material for long replacement intervals, which significantly reduces maintenance costs.

### Easy cleaning of radiator

The hydraulically driven fan can be reversed to facilitate cleaning of the cooling unit. In addition, this feature contributes to reducing warm-up time in low temperatures. Hinged A/C condenser and fuel cooler provide easy access to each core.



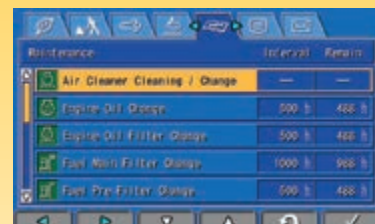
Pre-cleaner



Large capacity fuel pre-filter with water separator



Coolant filter



Basic maintenance screen



## Quality you can rely on



### Rugged design

The undercarriage of the PC1250-11R is specifically designed to cope with the heavy forces to be found in hard quarry operations. With heavy duty double grouser track shoes and roller guard options, the moving parts of the undercarriage are strongly shielded against damage from rocks, while traction force and ground pressure may be optimized for your particular site.

### Komatsu-quality

With the latest computer techniques and a thorough test programme, Komatsu's global know-how produces equipment to meet your highest standards.

### Reliable and efficient

Productivity is the key to success – all major components of the PC1250-11R are designed and manufactured by Komatsu. All essential functions are perfectly matched for a highly reliable and productive machine.

### High strength boom and arm

Thanks to the large cross-sectional structure made with high tensile strength steel and a thick plate and partition wall, the boom and arm provide excellent durability and are highly resistant to bending and twisting. Highly durable rubbing strips on the underside of the arm protect the structure from damage. The reinforced short boom and arm specification allows to increase the bucket capacity.



Sturdy travel motor guards and rock protectors



Full length track roller guards



Clogging detector in hydraulic return filter prevents damage of hydraulic system



Bulkhead wall (fire wall) prevents oil from splashing into the engine room in the event of hydraulic oil leak

## Komatsu total support



### Komatsu total support

To keep your machine available and minimize operation cost when you need it, Komatsu distributor is ready to provide a variety of supports before and after procuring the machine.

#### Fleet recommendation

Komatsu distributor can study the customer's job site and provide the most optimum fleet recommendation with detailed information to meet all of your application needs when you are considering to buy new machines or replace the existing ones from Komatsu.



#### Product support

Komatsu distributor gives the proactive support and secures the quality of the machine that will be delivered.

#### Parts availability

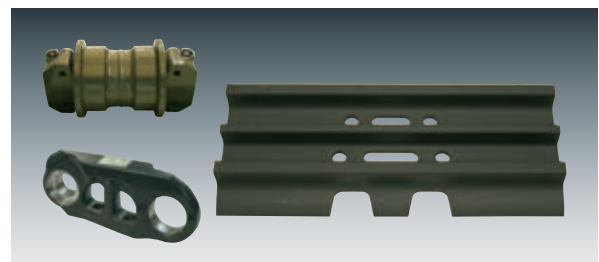
Komatsu distributor is available for emergency inquiry by the customers for genuine, quality guaranteed Komatsu parts.



### Technical support

Komatsu product support service (technical support) is designed to help customer. Komatsu distributor offers a variety of effective services to show how much Komatsu is dedicated to the maintenance and support of Komatsu machine.

- Preventive Maintenance (PM) clinic
- Oil & wear analysis program
- Undercarriage inspection service, etc.



### Repair & maintenance service

Komatsu Distributor offers quality repair and maintenance service to the customer, utilizing and promoting Komatsu developed programs.

### Komatsu Reman

#### (remanufactured) components

Komatsu Reman products are the result of the implementation of the Komatsu global policy which establishes and agrees to reduce the owning, operating and total Life Cycle Costs (LCC) to Komatsu's customer through high quality, prompt delivery and competitively priced in own remanufactured products (QDC).





# Specifications

## Engine

Model	Komatsu SAA6D170E-7
Type	4-cycle, water-cooled, direct injection
Aspiration	Turbocharged, aftercooled
Engine power	
at rated engine speed	1800 rpm
SAE J1995	578 kW / 775 HP
ISO 9249 / SAE J1349*	560 kW / 750 HP
No. of cylinders	6
Bore × stroke	170 × 170 mm
Displacement	23.15 l
Fan drive type	Hydraulic
Fuel	Up to 30% blended biodiesel fuel and paraffine fuel can be used. Please consult your Komatsu distributor for detail.

\* Net horsepower at the maximum speed of radiator cooling fan is 493 kW / 661 HP  
Level of engine emissions is equivalent to that of EPA Tier 2

## Hydraulic system

Type	Open-center load-sensing system
Main pump	3 variable displacement piston pumps supplying boom, arm, bucket, swing and travel circuits
Maximum pump flow	
Implement and travel	2 × 494 l/min
Swing	1 × 600 l/min
Sub-pump for control circuit	Gear pump
Hydraulic motors	
Travel	2 × axial piston motors with parking brake
Swing	2 × axial piston motors with swing holding brake
Relief valve setting	
Implement (Backhoe / loading shovel)	320 kgf/cm <sup>2</sup>
Travel circuit	350 kgf/cm <sup>2</sup>
Swing circuit	280 kgf/cm <sup>2</sup>
Pilot circuit	32 kgf/cm <sup>2</sup>
Hydraulic cylinders	(Number of cylinders-bore × stroke)
Backhoe	
Boom	2 – 225 mm × 2390 mm
Arm	1 – 250 mm × 2435 mm
Bucket	
Std	2 – 160 mm × 1825 mm
SP	2 – 160 mm × 1950 mm

## Swing system

Drive method	2 × hydraulic motors
Swing reduction	Planetary gear
Swing circle lubrication	Grease-bathed
Swing lock	Oil disc brake
Swing speed	5.8 rpm

## Drives and brakes

Steering control	2 levers with pedals, giving full independent control of each track
Drive method	Fully hydrostatic
Travel motor	Axial piston motor, in-shoe design
Reduction system	Planetary triple reduction
Maximum drawbar pull	686 kN / 70000 kgf
Gradeability	70%
Max. travel speeds (Lo/Hi)	2.3 / 3.3 km/h
Service brake	Hydraulic lock
Parking brake	Oil disc brake

## Undercarriage

Construction	H-leg frame with box section track frames
Track assembly	
Type	Sealed
Shoes (each side)	48
Tension	Hydraulic
Rollers	
Track rollers (each side)	8
Carrier rollers (each side)	3

## Service refill capacities

Fuel tank	1360 l
Radiator	134 l
Engine oil	86 l
Final drive (each side)	21 l
Swing drive	20 × 2 l
Hydraulic tank	670 l
Power Take Off (PTO)	13.5 l

## Operating weight (appr.)

	PC1250-11R		PC1250-11R SP	
Double grouser shoes 700 mm	Operating weight	Ground pressure	Operating weight	Ground pressure
	116400 kg	1.51 kgf/cm <sup>2</sup>	118600 kg	1.54 kgf/cm <sup>2</sup>

### Backhoe

PC1250-11R: Operating weight, including 9100 mm boom, 3400 mm arm, ISO 7451 heaped 5.0 m<sup>3</sup> backhoe bucket, operator, lubricant, coolant, full fuel tank, and the standard equipment.

PC1250-11R SP: Operating weight, including 7800 mm boom, 3400 mm arm, ISO 7451 heaped 6.7 m<sup>3</sup> backhoe bucket, full length roller guard, operator, lubricant, coolant, full fuel tank, and the standard equipment.

PC1250-11R Loading shovel		
Double grouser shoes 700 mm	Operating weight	Ground pressure
	119700 kg	1.56 kgf/cm <sup>2</sup>

### Loading shovel

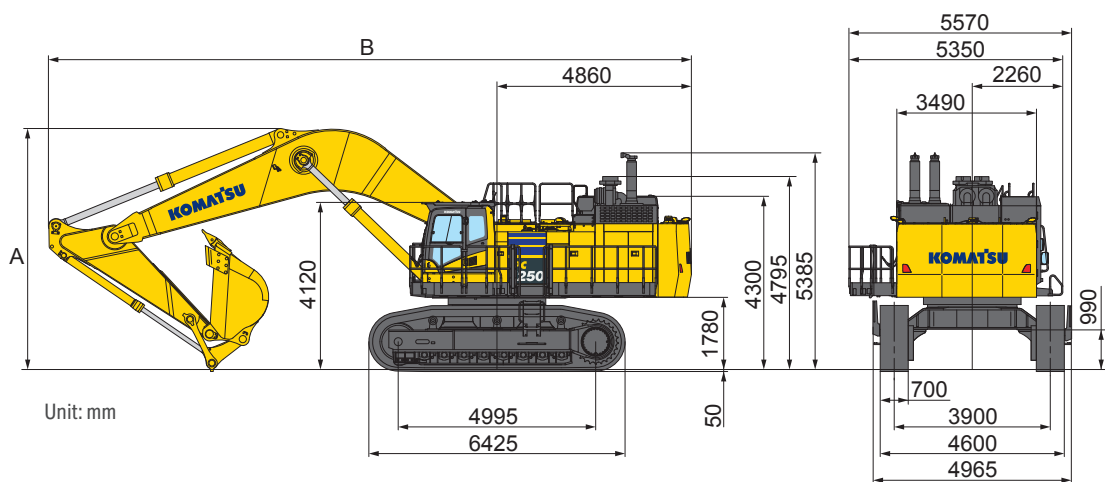
Operating weight, including 5300 mm boom, 3800 mm arm, ISO 7451 heaped 6.5 m<sup>3</sup> bucket, operator, lubricant, coolant, full fuel tank, and the standard equipment.

## Dimensions and performance figures

### PC1250-11R

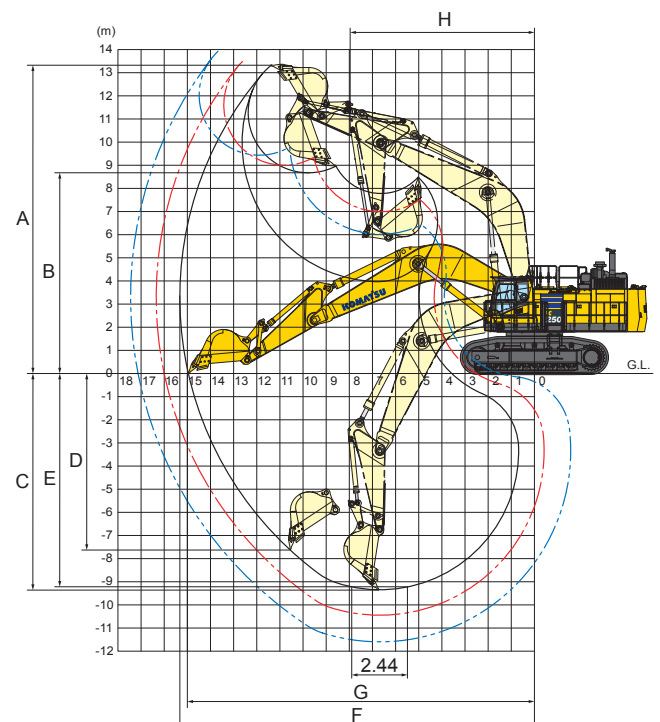
#### Machine dimensions

Boom length	9100 mm		
Arm length	3400 mm	4500 mm	5700 mm
A Overall height	6040 mm	6460 mm	6990 mm
B Overall length	16070 mm	16100 mm	15890 mm



#### Working range

Arm length	3400 mm	4500 mm	5700 mm
A Max. digging height	13400 mm	13490 mm	13910 mm
B Max. dumping height	8680 mm	9000 mm	9440 mm
C Max. digging depth	9350 mm	10440 mm	11590 mm
D Max. vertical wall digging depth	7610 mm	8490 mm	9480 mm
E Max. digging depth of cut for 2.44 m level	9220 mm	10340 mm	11500 mm
F Max. digging reach	15350 mm	16340 mm	17450 mm
G Max. digging reach at ground level	15000 mm	16000 mm	17130 mm
H Min. swing radius	7965 mm	7990 mm	8150 mm
Bucket digging force (SAE J1179)	422 kN	422 kN	343 kN
	43000 kgf	43000 kgf	35000 kgf
Arm crowd force (SAE J1179)	392 kN	327 kN	281 kN
	40000 kgf	33300 kgf	28700 kgf
Bucket digging force (ISO 6015)	479 kN	479 kN	389 kN
	48800 kgf	48800 kgf	39700 kgf
Arm crowd force (ISO 6015)	412 kN	337 kN	286 kN
	42000 kgf	34400 kgf	29200 kgf

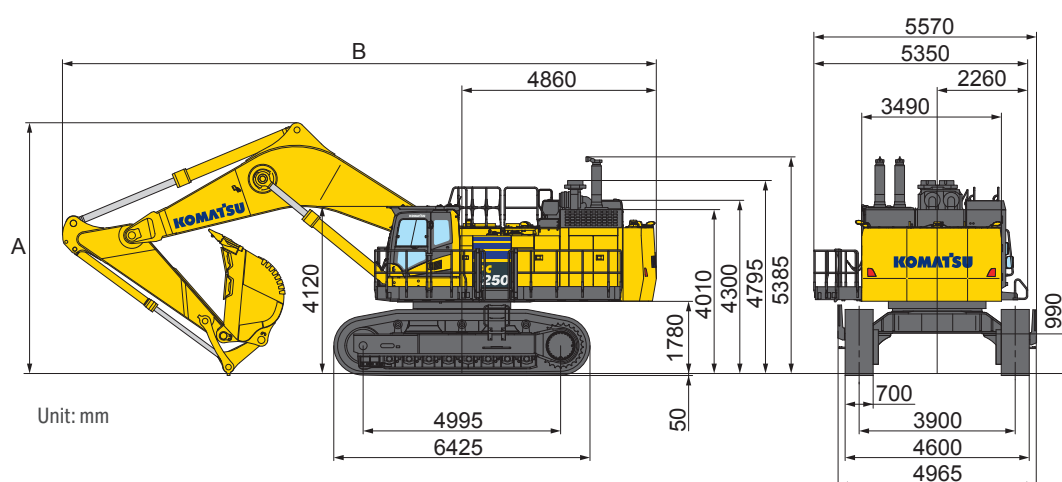




## PC1250-11R SP specification

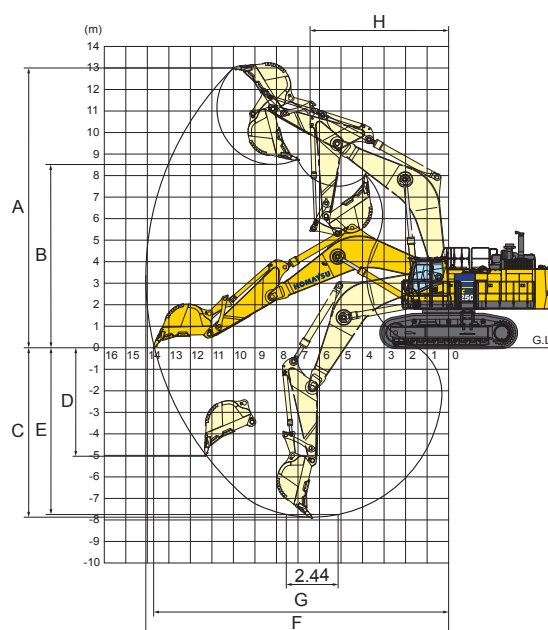
### Machine dimensions

Boom length	7800 mm
Arm length	3400 mm
A Overall height	6265 mm
B Overall length	14790 mm



### Working range

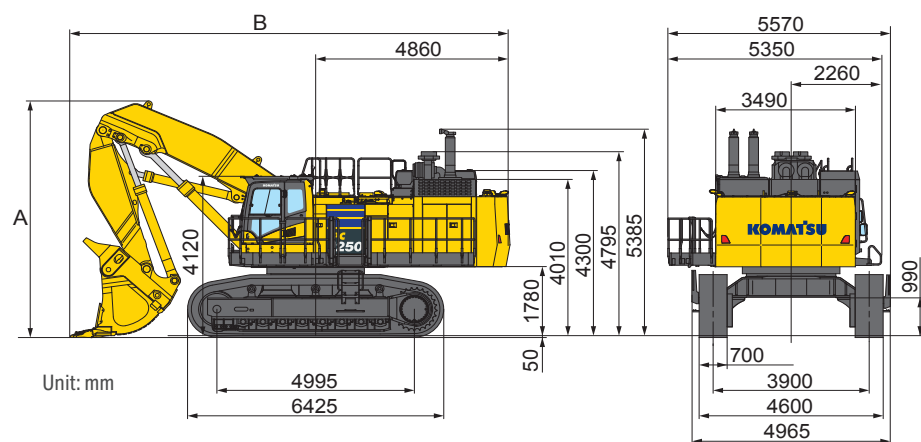
A Max. digging height	13000 mm
B Max. dumping height	8450 mm
C Max. digging depth	7900 mm
D Max. vertical wall digging depth	5025 mm
E Max. digging depth of cut for 2.44 m level	7745 mm
F Max. digging reach	14070 mm
G Max. digging reach at ground level	13670 mm
H Min. swing radius	6415 mm
Bucket digging force (SAE J1179)	502 kN/51200 kgf
Arm crowd force (SAE J1179)	395 kN/40300 kgf
Bucket digging force (ISO 6015)	570 kN/58100 kgf
Arm crowd force (ISO 6015)	412 kN/42000 kgf



## Dimensions and performance figures

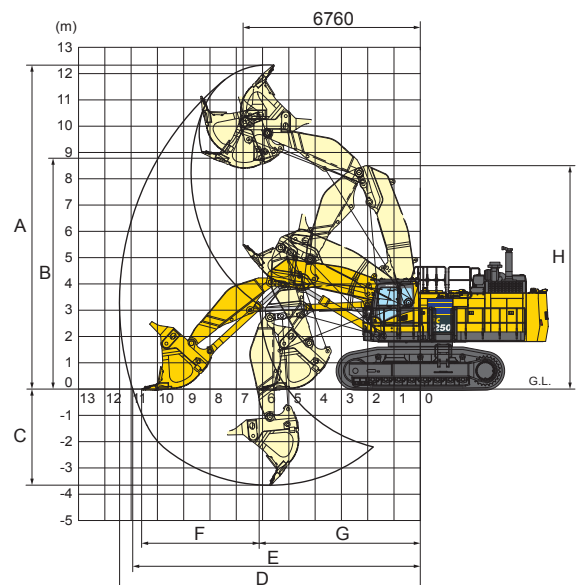
## PC1250-11R Loading shovel

Type of bucket	Bottom dump
Capacity (heaped)	6.50 m <sup>3</sup>
A Overall height	6200 mm
B Overall length	10990 mm



### Working range

A	Max. digging height	12330 mm
B	Max. dumping height	8700 mm
C	Max. digging depth	3650 mm
D	Max. vertical wall digging depth	11400 mm
E	Max. digging depth of cut for 2.44 m level	10900 mm
F	Max. digging reach	4480 mm
G	Max. digging reach at ground level	6130 mm
H	Min. swing radius	8500 mm
	Bucket digging force	579 kN/59000 kgf
	Arm crowd force	608 kN/62000 kgf





**Max. bucket capacity and weight****PC1250-11**

Arm length / Max. pin load	3.4 m / 15140 kg	4.5 m / 13580 kg	5.7 m / 9833 kg
Material weight up to 1.4 t/m <sup>3</sup>	6.0 m <sup>3</sup> 6740 kg	5.5 m <sup>3</sup> 5950 kg	3.80 m <sup>3</sup> 4510 kg
Material weight up to 1.6 t/m <sup>3</sup>	5.6 m <sup>3</sup> 6180 kg	5.2 m <sup>3</sup> 5420 kg	3.54 m <sup>3</sup> 4388 kg
Material weight up to 1.8 t/m <sup>3</sup>	5.2 m <sup>3</sup> 5780 kg	4.7 m <sup>3</sup> 5170 kg	3.28 m <sup>3</sup> 3933 kg

**PC1250SP-11**

Arm length / Max. pin load	3.4 m / 18568 kg
Material weight up to 1.4 t/m <sup>3</sup>	7.57 m <sup>3</sup> 7970 kg
Material weight up to 1.6 t/m <sup>3</sup>	7.01 m <sup>3</sup> 7352 kg
Material weight up to 1.8 t/m <sup>3</sup>	6.70 m <sup>3</sup> 6505 kg

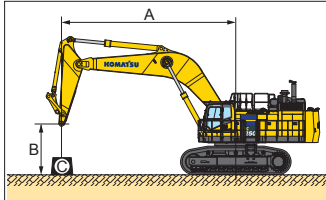
**PC1250-11 Loading Shovel**

Arm length / Max. pin load	3.8 m / 22700 kg
Material weight up to 1.4 t/m <sup>3</sup>	8.00 m <sup>3</sup> 11500 kg
Material weight up to 1.6 t/m <sup>3</sup>	7.20 m <sup>3</sup> 10600 kg
Material weight up to 1.8 t/m <sup>3</sup>	6.50 m <sup>3</sup> 9730 kg

Max. capacity and weight have been calculated according to ISO 10567:2007.

Please consult with your distributor for the correct selection of buckets and attachments to suit the application.

## Lifting capacity



### PC1250-11R

Equipment:

- Boom: 9.1 m
- Arm: 3.4 m
- Without bucket
- Track shoe width: 700 mm

A: Reach from swing center

B: Arm top pin height

C: Lifting capacity

Cf: Rating over front

Cs: Rating over side

☉: Rating at maximum reach

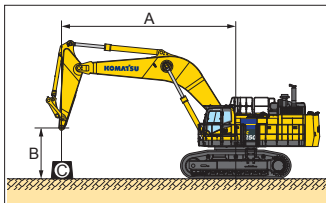
#### Heavy lift "ON"

B \ A	☉ MAX		12.2 m		10.7 m		9.1 m		7.6 m		6.1 m		4.6 m	
	Cf	Cs	Cf	Cs	Cf	Cs	Cf	Cs	Cf	Cs	Cf	Cs	Cf	Cs
9.1 m	*21050 kg	20050 kg			*21400 kg	*21400 kg								
6.1 m	20150 kg	16300 kg	20750 kg	16850 kg	*23150 kg	21100 kg	*25900 kg	*25900 kg	*30700 kg	*30700 kg				
3.0 m	18650 kg	15000 kg	19950 kg	16050 kg	24400 kg	19650 kg	*30350 kg	24500 kg	*37750 kg	31550 kg				
0.0 m	19250 kg	15400 kg	19450 kg	15550 kg	23450 kg	18700 kg	29250 kg	23150 kg	38350 kg	30000 kg				
-3.0 m	22750 kg	18200 kg			23500 kg	18750 kg	29150 kg	23100 kg	*38000 kg	30100 kg	*46650 kg	42850 kg	*39600 kg	*39600 kg
-6.1 m	*23900 kg	*23900 kg							*28050 kg	*28050 kg	*35000 kg	*35000 kg		

#### Heavy lift "OFF"

B \ A	☉ MAX		12.2 m		10.7 m		9.1 m		7.6 m		6.1 m		4.6 m	
	Cf	Cs	Cf	Cs	Cf	Cs	Cf	Cs	Cf	Cs	Cf	Cs	Cf	Cs
9.1 m	*19050 kg	*19050 kg			*18900 kg	*18900 kg								
6.1 m	*18600 kg	16300 kg	*19150 kg	16850 kg	*20400 kg	*20400 kg	*22900 kg	*22900 kg	*27200 kg	*27200 kg				
3.0 m	18650 kg	15000 kg	19950 kg	16050 kg	*22800 kg	19650 kg	*26750 kg	24500 kg	*33350 kg	31550 kg				
0.0 m	19250 kg	15400 kg	19450 kg	15550 kg	23450 kg	18700 kg	*28800 kg	23150 kg	*35500 kg	30000 kg				
-3.0 m	*21450 kg	18200 kg			*22600 kg	18750 kg	*27550 kg	23100 kg	*33500 kg	30100 kg	*41100 kg	*41100 kg	*36000 kg	*36000 kg
-6.1 m	*20800 kg	*20800 kg							*24500 kg	*24500 kg	*30650 kg	*30650 kg		

\* Load is limited by hydraulic capacity rather than tipping. Ratings are based on ISO standard No. 10567. Rated loads do not exceed 87% of hydraulic lift capacity or 75% of tipping load.



### PC1250-11R

Equipment:

- Boom: 9.1 m
- Arm: 4.5 m
- Without bucket
- Track shoe width: 700 mm

A: Reach from swing center

B: Arm top pin height

C: Lifting capacity

Cf: Rating over front

Cs: Rating over side

☉: Rating at maximum reach

#### Heavy lift "ON"

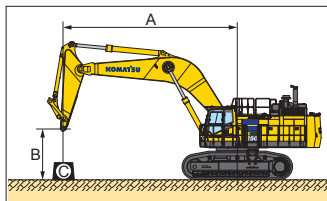
B \ A	☉ MAX		12.2 m		10.7 m		9.1 m		7.6 m		6.1 m		4.6 m	
	Cf	Cs	Cf	Cs	Cf	Cs	Cf	Cs	Cf	Cs	Cf	Cs	Cf	Cs
9.1 m	*14400 kg	*14400 kg	*17050 kg	*17050 kg										
6.1 m	*14150 kg	*14150 kg	*19800 kg	17200 kg	*21200 kg	*21200 kg	*23500 kg	*23500 kg						
3.0 m	*14850 kg	13250 kg	20000 kg	16100 kg	*24350 kg	19750 kg	*28400 kg	24800 kg	*35050 kg	32150 kg				
0.0 m	*16750 kg	13450 kg	19150 kg	15300 kg	23250 kg	18500 kg	29050 kg	22950 kg	38050 kg	29700 kg	*30900 kg	*30900 kg		
-3.0 m	19250 kg	15350 kg			22850 kg	18100 kg	28500 kg	22450 kg	37550 kg	29250 kg	*48900 kg	41450 kg	*34850 kg	*34850 kg
-6.1 m	*22950 kg	21250 kg					*26350 kg	23400 kg	*32900 kg	30300 kg	*40600 kg	*40600 kg	*51100 kg	*51100 kg

#### Heavy lift "OFF"

B \ A	☉ MAX		12.2 m		10.7 m		9.1 m		7.6 m		6.1 m		4.6 m	
	Cf	Cs	Cf	Cs	Cf	Cs	Cf	Cs	Cf	Cs	Cf	Cs	Cf	Cs
9.1 m	*12950 kg	*12950 kg	*15350 kg	*15350 kg										
6.1 m	*12700 kg	*12700 kg	*17400 kg	17200 kg	*18650 kg	*18650 kg	*20750 kg	*20750 kg						
3.0 m	*13350 kg	13250 kg	*19100 kg	16100 kg	*21400 kg	19750 kg	*25000 kg	24800 kg	*30900 kg	*30900 kg				
0.0 m	*15050 kg	13450 kg	19150 kg	15300 kg	23250 kg	18500 kg	*27900 kg	22950 kg	*34600 kg	29700 kg	*28100 kg	*28100 kg		
-3.0 m	*18800 kg	15350 kg			22850 kg	18100 kg	*28050 kg	22450 kg	*34250 kg	29250 kg	*43100 kg	41450 kg	*31700 kg	*31700 kg
-6.1 m	*20000 kg	*20000 kg					*23050 kg	*23050 kg	*28800 kg	*28800 kg	*35650 kg	*35650 kg	*44800 kg	*44800 kg

\* Load is limited by hydraulic capacity rather than tipping. Ratings are based on ISO standard No. 10567. Rated loads do not exceed 87% of hydraulic lift capacity or 75% of tipping load.





## PC1250-11R

Equipment:

- Boom: 9.1 m
- Arm: 5.7 m
- Without bucket
- Track shoe width: 700 mm

A: Reach from swing center

B: Arm top pin height

C: Lifting capacity

Cf: Rating over front

Cs: Rating over side

☉: Rating at maximum reach

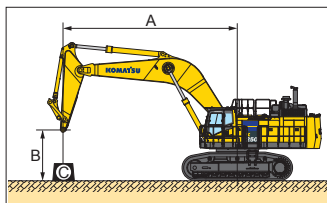
### Heavy lift "ON"

B \ A	☉ MAX		13.7 m		12.2 m		10.7 m		9.1 m		7.6 m		6.1 m	
	Cf	Cs	Cf	Cs	Cf	Cs	Cf	Cs	Cf	Cs	Cf	Cs	Cf	Cs
9.1 m	*10200 kg	*10200 kg												
6.1 m	*10050 kg	*10050 kg	*16850 kg	14100 kg	*17700 kg	17500 kg								
3.0 m	*10500 kg	*10500 kg	16600 kg	13300 kg	*20050 kg	16200 kg	*22400 kg	20000 kg	*25950 kg	25250 kg	*31650 kg	*31650 kg		
0.0 m	*11700 kg	11600 kg	15900 kg	12600 kg	18950 kg	15100 kg	23150 kg	18350 kg	29000 kg	22950 kg	*37400 kg	29750 kg	*33850 kg	*33850 kg
-3.0 m	*14150 kg	12900 kg			18450 kg	14600 kg	22350 kg	17600 kg	27950 kg	21900 kg	36900 kg	28600 kg	*48700 kg	40400 kg
-6.1 m	*19900 kg	16700 kg					22750 kg	18000 kg	28300 kg	22250 kg	*35500 kg	29050 kg	*44400 kg	41400 kg

### Heavy lift "OFF"

B \ A	☉ MAX		13.7 m		12.2 m		10.7 m		9.1 m		7.6 m		6.1 m	
	Cf	Cs	Cf	Cs	Cf	Cs	Cf	Cs	Cf	Cs	Cf	Cs	Cf	Cs
9.1 m	*9100 kg	*9100 kg												
6.1 m	*8950 kg	*8950 kg	*14900 kg	14100 kg	*15500 kg	*15500 kg								
3.0 m	*9350 kg	*9350 kg	*16150 kg	13300 kg	*17550 kg	16200 kg	*19600 kg	*19600 kg	*22800 kg	*22800 kg	*27900 kg	*27900 kg		
0.0 m	*10400 kg	*10400 kg	15900 kg	12600 kg	18950 kg	15100 kg	*22200 kg	18350 kg	*26450 kg	22950 kg	*32900 kg	29750 kg	*30750 kg	*30750 kg
-3.0 m	*12650 kg	*12650 kg			18450 kg	14600 kg	22350 kg	17600 kg	*27700 kg	21900 kg	*34150 kg	28600 kg	*43750 kg	40400 kg
-6.1 m	*17900 kg	16700 kg					*20550 kg	18000 kg	*25300 kg	22250 kg	*31100 kg	29050 kg	*38950 kg	*38950 kg

\* Load is limited by hydraulic capacity rather than tipping. Ratings are based on ISO standard No. 10567. Rated loads do not exceed 87% of hydraulic lift capacity or 75% of tipping load.



## PC1250-11R SP specification

Equipment:

- Boom: 7.8 m
- Arm: 3.4 m
- Without bucket
- Track shoe width: 700 mm

A: Reach from swing center

B: Arm top pin height

C: Lifting capacity

Cf: Rating over front

Cs: Rating over side

☉: Rating at maximum reach

### Heavy lift "ON"

B \ A	☉ MAX		12.2 m		10.7 m		9.1 m		7.6 m		6.1 m		4.6 m	
	Cf	Cs	Cf	Cs	Cf	Cs	Cf	Cs	Cf	Cs	Cf	Cs	Cf	Cs
9.1 m	*19400 kg	*19400 kg					*27000 kg	*27000 kg						
6.1 m	*18450 kg	*18450 kg			26250 kg	21400 kg	*29050 kg	27650 kg	*33150 kg	*33150 kg	*40350 kg	*40350 kg		
3.0 m	*19400 kg	18250 kg			25150 kg	20350 kg	31850 kg	25650 kg	*39650 kg	33550 kg				
0.0 m	*22500 kg	19000 kg			24450 kg	19650 kg	30500 kg	24400 kg	40150 kg	31700 kg	*53450 kg	44450 kg		
-3.0 m	*26650 kg	23700 kg					*28650 kg	24600 kg	*36850 kg	31750 kg	*45950 kg	44800 kg	*57250 kg	*57250 kg
-6.1 m														

### Heavy lift "OFF"

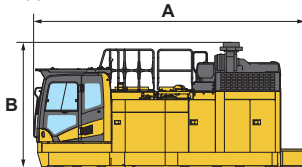
B \ A	☉ MAX		12.2 m		10.7 m		9.1 m		7.6 m		6.1 m		4.6 m	
	Cf	Cs	Cf	Cs	Cf	Cs	Cf	Cs	Cf	Cs	Cf	Cs	Cf	Cs
9.1 m	*17550 kg	*17550 kg					*24100 kg	*24100 kg						
6.1 m	*16550 kg	*16550 kg			*23750 kg	21400 kg	*25850 kg	*25850 kg	*29550 kg	*29550 kg	*36100 kg	*36100 kg		
3.0 m	*17500 kg	*17500 kg			*25150 kg	20350 kg	*29050 kg	25650 kg	*35250 kg	33550 kg				
0.0 m	*20300 kg	19000 kg			24450 kg	19650 kg	*30250 kg	24400 kg	*37150 kg	31700 kg	*47450 kg	44450 kg		
-3.0 m	*23450 kg	*23450 kg					*25250 kg	24600 kg	*32550 kg	31750 kg	*40650 kg	*40650 kg	*50600 kg	*50600 kg
-6.1 m														

\* Load is limited by hydraulic capacity rather than tipping. Ratings are based on ISO standard No. 10567. Rated loads do not exceed 87% of hydraulic lift capacity or 75% of tipping load.

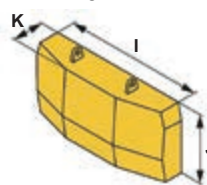
# PC1250-11R

Transportation guide		Unit	Model			
			PC1250-11R			
			Standard specification		SP specification	Loading shovel
			Heavy duty bucket	General purpose bucket	SP bucket	Loading shovel bucket
Upper structure	Length (A) × height (B) × width	mm	6780×3030×3495			
	Weight (including lifting jig)	t	29.5			
Track frame	Length (C) × height (D) × width (E)	mm	6365×1310×1585			
	Weight	t	31.6 (15.8 t×2)			
Center frame	Length (F) × height (G) × width (H)	mm	2850×1170×3540			
	Weight	t	10.2			
Counterweight	Length (I) × height (J) × width (K)	mm	3490×1995×855			
	Weight	t	16.6			
Work equipment assembly	Weight	t	27.2	25.8	27.9	28.4
Boom	Length × height × width	mm	9475×2894×1474		8170×3095×1474	5650×1500×2000
	Weight	t	11.2		11.0	7.1
Arm	Length × height × width	mm	4895×1626×890		4914×1683×890	4100×1300×1900
	Weight	t	6.4		6.6	5.2
Arm cylinder	Length	mm	3950			2980
	Weight	t	1.5			1.2 (0.6 t×2)
Boom cylinder	Length	mm	3810			3520
	Weight	t	2.4 (1.2 t×2)			2.2 (1.1 t×2)
Bucket cylinder	Length	mm	Included in arm			3300
	Weight	t	Included in arm			1.7 (0.85 t×2)
Bucket	Length (L) × height (M) × width	mm	2580×2276×2310	2700×2100×2220	2527×2420×2530	3000×2700×2800
	Weight	t	5.8	4.4	6.5	11.0
Others	Weight	t	1.3			
Right duct	Length (N) × height (O)	mm	2015×220			
	Weight	kg	15			
	Length (P) × height (Q)	mm	2015×1960			
	Weight	kg	140			
Catwalk	Length (R) × width (S)	mm	2670×1120			
	Weight	kg	266			
	Length (T) × width (U)	mm	700×500			
	Weight	kg	40			
	Length (V) × width (W)	mm	2725×620			
	Weight	kg	190			
Handrail, covers, exhaust tube, step	Weight	kg	660			

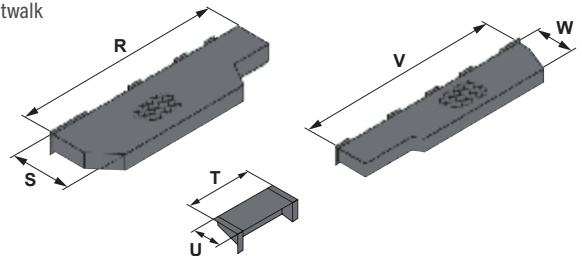
Upper frame



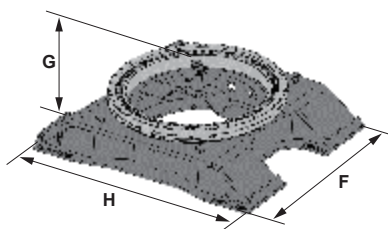
Counterweight



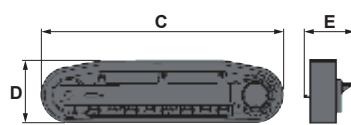
Catwalk



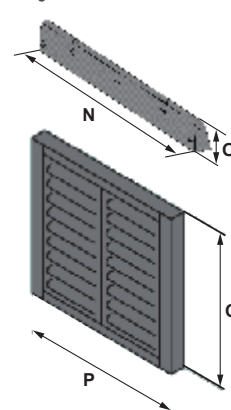
Center frame



Track frame



Right duct



Covers



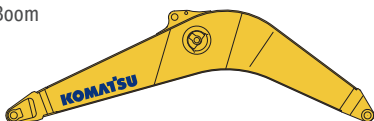
Handrail



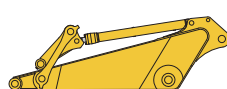
Exhaust tube



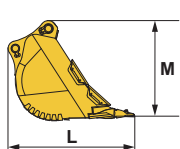
Boom



Arm



Bucket



Arm cylinder



Boom cylinder



# Standard and optional equipment

## Engine

Komatsu SAA6D170E-7 engine	●
Automatic engine warm-up system	●
Dry type air cleaner, double element	●
Large capacity fuel pre-filter with water separator	●
Variable speed cooling fan, hydraulic drive, reversible	●
Coolant filter	●
Auto-decelerator, auto-idling system	●
Auto idle shutdown (programmable)	●
Alternator 24 V / 90 A	●
Batteries 2 x 12 V / 220 Ah	●
Starter motor 24 V / 11 kW	●

## Hydraulic system

Fully hydraulic, with Open-Center Load-Sensing and engine speed sensing (Pump and engine mutual control system)	●
In-line high pressure filters	●
2 speed travel system with auto shift	●
3 working modes (Power plus, Power, Economy)	●
Pressure Proportional Control (PPC) hydraulic control system	●
Automatic swing holding brake	●
Heavy lift mode	●
Shockless control system for boom	●
Two-mode setting for boom	●

## Undercarriage

700 mm double grouser shoes	●
Full length track roller guards	●
Track frame undercovers (centre)	●
Track guiding guards (each side)	●
Travel motor guards	●
Rock protectors	●

## Cabin

Bolt-on top guard, OPG Level 2 (ISO 10262)	●
Cab with fixed type front window	●
Heated and ventilated high-back air-suspended seat, console mounted height adjustable arm rests	●
Automatic climate control system, with defroster	●
Large high resolution LCD color monitor	●
Bluetooth® radio with USB	●
Auxiliary input (3,5 mm jack)	●
12 V power supply	●
Cigarette lighter and ashtray	●
Beverage holder	●
Sun visor	●
Windshield washer and wipers	●
Mirrors (RH,LH)	●
Washable cab floor mat	●

## Service and maintenance

Equipment Management Monitoring System	●
Komtrax Plus	●
Preventive Maintenance (PM) tune-up service connector	●
One-touch engine oil drainage	●
Automatic greasing system	●
Grease gun, electric pump	●
Electric priming pump for fuel	●
Fuel quick charge system	●
Toolkit	●

## LED lighting system

Working lights: 2 boom, 2 cab roof, 2 frame	●
Walkway light	●
Beacon	●
Step light with timer	●
Rear working light	●

## Safety equipment

KomVision surround view system	●
Hydraulically operated stairway	●
Emergency engine stop switches	●
Secondary engine shut down switch	●
Battery disconnect switch	●
Circuit breaker	●
Neutral position detection system	●
Lock lever	●
Audible travel alarm	●
Seat belt indicator	●
Horn, air	●
Flashing light connected with horn	●
Wide catwalk	●
Hand rails & guard rails	●
Slip-resistant plates	●
Anchor point for safer access	●

## Work equipment

9.1 m backhoe boom	○
7.8 m SP specification boom	○
5.3 m loading shovel boom	○
3.4 m, 4.5 m, 5.7m backhoe arms	○
3.8 m loading shovel arm	○
Komatsu buckets	○

## Other equipment

Counterweight	●
Strengthened revolving frame underguards	●
Vandalism protection locks	●
Radiator and oil cooler dustproof net	●

Further equipment on request

- standard equipment
- optional equipment

This specification sheet may contain attachments and optional equipment that are not available in your area. Please consult your local Komatsu distributor for those items you may require. Materials and specifications are subject to change without notice.

The Bluetooth® word mark and logos are registered trademarks owned by Bluetooth SIG, Inc. and any use of such marks by Komatsu Group is under license. Other trademarks and trade names are those of their respective owners.



---

Your Komatsu partner:

**KOMATSU**

[komatsu.com](https://komatsu.com)